

\$1,075,000 - 38 South Shore Bay, Chestermere

MLS® #A2207325

\$1,075,000

7 Bedroom, 5.00 Bathroom, 2,862 sqft

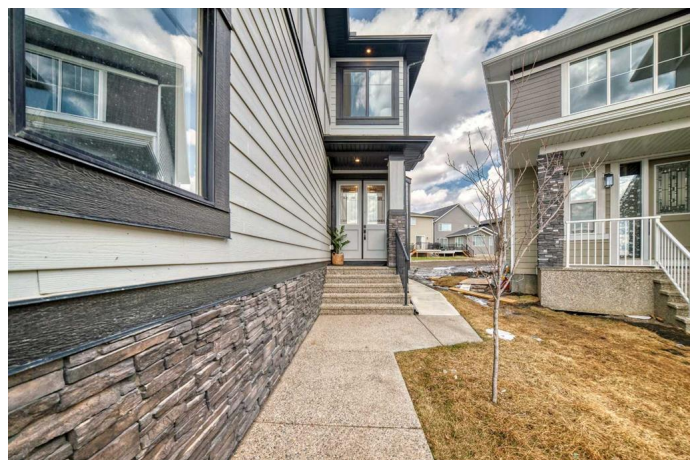
Residential on 0.16 Acres

South Shores, Chestermere, Alberta

This STUNNING EXECUTIVE HOME sits on a MASSIVE PIE-SHAPED LOT in the sought-after community of SOUTH SHORES, CHESTERMERE, offering over 3,870 SQUARE FEET of living space, along with a FULLY LEGAL 2-BEDROOM BASEMENT SUITE currently rented for \$1,600 PER MONTH. Tucked away on a QUIET CUL-DE-SAC, the home features HARDIE BOARD SIDING and a SPACIOUS TRIPLE-CAR GARAGE, giving it excellent curb appeal.

Inside, the MAIN FLOOR offers HIGH CEILINGS, an OPEN-TO-BELOW LAYOUT, and HARDWOOD FLOORING that runs seamlessly throughout the main and upper levels, matching the SHOWHOME FINISH. The KITCHEN is beautifully appointed with a LARGE QUARTZ ISLAND, UPGRADED HARDWARE, a CUSTOM WINE RACK, and a WALK-THROUGH CALIFORNIA CLOSET-DESIGNED PANTRY that leads to a FULL SPICE KITCHEN. The layout is fantastic, OPEN CONCEPT with NO WASTED SPACE, and a MAIN FLOOR BEDROOM OR DEN, paired with a FULL BATHROOM, adds flexibility for GUESTS, EXTENDED FAMILY, or a HOME OFFICE.

LIGHT TRANSFER throughout the home is EXCEPTIONAL. The OPEN RAILING ABOVE and the OPEN-TO-BELOW DESIGN enhance the sense of connection between floors and



create an AIRY, INVITING ATMOSPHERE.

The UPPER BONUS ROOM is especially impressive, offering a SPACIOUS YET CONNECTED FEEL that ties the home together beautifully.

Upstairs, FOUR GENEROUSLY SIZED BEDROOMS each have DIRECT ACCESS TO A BATHROOM, including a LUXURIOUS PRIMARY SUITE with a SPA-INSPIRED ENSUITE and CUSTOM WALK-IN CLOSET. A SECOND UPPER-LEVEL BEDROOM WITH A PRIVATE ENSUITE provides added comfort and privacy for MULTI-GENERATIONAL FAMILIES or LONG-TERM GUESTS. The conveniently located UPPER-LEVEL LAUNDRY ROOM adds even more function to the thoughtful design.

The FULLY LEGAL BASEMENT SUITE includes its own PRIVATE ENTRANCE, FULL KITCHEN, LAUNDRY, and TWO LARGE BEDROOMS. Finished to a HIGH STANDARD, itâ€™s perfect for generating RENTAL INCOME or accommodating EXTENDED FAMILY.

Set on one of the LARGEST LOTS in the neighborhood, the EXPANSIVE PIE-SHAPED YARD offers endless potential for OUTDOOR DEVELOPMENT, whether itâ€™s a CUSTOM PATIO, GARDEN, or PLAY AREA.

Additional highlights include UPGRADED HIGH-EFFICIENCY TOILETS THROUGHOUT, CUSTOM LIGHT FIXTURES, and consistent HIGH-END FINISHES across all levels. With SEVEN BEDROOMS and FIVE FULL BATHROOMS, this home offers a RARE COMBINATION of SPACE, COMFORT, and INCOME POTENTIAL in one of Chestermereâ€™s most desirable communities.

DONâ€™T MISS THIS OPPORTUNITY,
BOOK YOUR PRIVATE SHOWING TODAY.

Built in 2024

Essential Information

| | |
|----------------|-------------|
| MLS® # | A2207325 |
| Price | \$1,075,000 |
| Bedrooms | 7 |
| Bathrooms | 5.00 |
| Full Baths | 5 |
| Square Footage | 2,862 |
| Acres | 0.16 |
| Year Built | 2024 |
| Type | Residential |
| Sub-Type | Detached |
| Style | 2 Storey |
| Status | Active |

Community Information

| | |
|-------------|--------------------|
| Address | 38 South Shore Bay |
| Subdivision | South Shores |
| City | Chestermere |
| County | Chestermere |
| Province | Alberta |
| Postal Code | T1X 2S1 |

Amenities

| | |
|----------------|------------------------|
| Parking Spaces | 6 |
| Parking | Triple Garage Attached |
| # of Garages | 3 |

Interior

| | |
|-------------------|---|
| Interior Features | Breakfast Bar, Built-in Features, Double Vanity, High Ceilings, Kitchen Island, Open Floorplan, Pantry, See Remarks, Soaking Tub, Walk-In Closet(s) |
| Appliances | Built-In Oven, Central Air Conditioner, Dishwasher, Electric Range, Gas Stove, Microwave, Range Hood, Refrigerator, Window Coverings |
| Heating | Forced Air, Natural Gas |

| | |
|-----------------|-------------|
| Cooling | Central Air |
| Fireplace | Yes |
| # of Fireplaces | 1 |
| Fireplaces | Gas |
| Has Basement | Yes |
| Basement | Full, Suite |

Exterior

| | |
|-------------------|--------------------------------|
| Exterior Features | None |
| Lot Description | Pie Shaped Lot |
| Roof | Asphalt Shingle |
| Construction | Stone, Wood Frame, Wood Siding |
| Foundation | Poured Concrete |

Additional Information

| | |
|----------------|-----------------|
| Date Listed | April 3rd, 2025 |
| Days on Market | 17 |
| Zoning | Rc-1 |

Listing Details

| | |
|----------------|----------------------------------|
| Listing Office | Coldwell Banker Mountain Central |
|----------------|----------------------------------|

Data is supplied by Pillar 9â„¢ MLS® System. Pillar 9â„¢ is the owner of the copyright in its MLS® System. Data is deemed reliable but is not guaranteed accurate by Pillar 9â„¢. The trademarks MLS®, Multiple Listing Service® and the associated logos are owned by The Canadian Real Estate Association (CREA) and identify the quality of services provided by real estate professionals who are members of CREA. Used under license.