

\$559,900 - 154 Martindale Drive Ne, Calgary

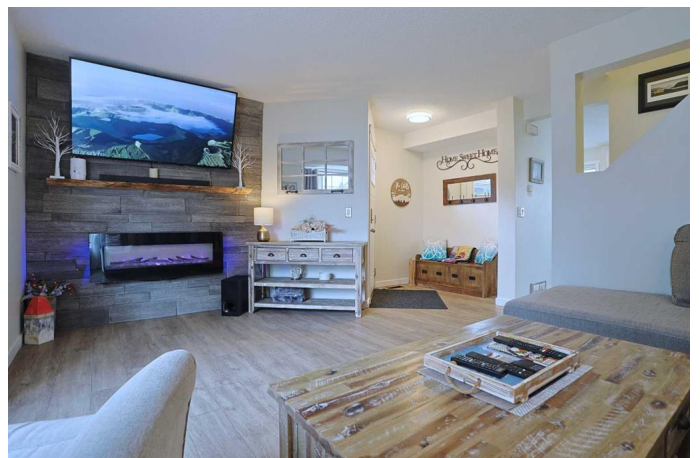
MLS® #A2204750

\$559,900

3 Bedroom, 1.00 Bathroom, 1,085 sqft
Residential on 0.06 Acres

Martindale, Calgary, Alberta

Ready & waiting for a new family to make it their own is this beautifully updated two storey in the popular Northeast Calgary neighbourhood of Martindale, just minutes to shopping, schools & LRT. This extensively renovated home enjoys vinyl plank floors & quartz countertops, 3 bedrooms, low-maintenance backyard with huge deck & dream "man-cave" garage with heater & workbench. You'll just love the spacious West-facing living room with its sleek electric fireplace complemented by stone feature wall - the perfect space for entertaining or hanging out with the family. Renovated in 2019, the open concept kitchen/dining room has quartz counters & stone baseboards, soft-close cabinetry & stainless steel appliances including brand new LG dishwasher. Upstairs, all 3 bedrooms have vinyl plank floors & great closet space; the closet in the primary bedroom is complete with built-in organizers. Between the bedrooms is the updated full bathroom - completed in 2025. The partially finished rec room - which just needs the ceilings installed, has commercial grade carpets, & laundry/storage area with Samsung steam washer & dryer (2019-2020). The fully fenced backyard is your private sanctuary with bar area enclosed with privacy screens & loads of space for a hot tub & seating. The oversized detached 2 car garage - built in 2022, is equipped with overhead storage, heater, TV & workbench - your perfect getaway! Among



the extensive list of improvements over the last 8 years: vinyl siding & stonework on the house & garage (2020-2022), roof/fascia/soffits/eaves (2022), hot water tank (2018), lighting, interior paint & doors, baseboards, Hisense fridge (2024) & Samsung stove/microwave (2019). The Genesis Centre & all the shopping & services at Saddletowne Crossing are only a few short minutes away, & with its quick access to Metis Trail youâ€™ve got an easy commute to the LRT, airport, Peter Lougheed Centre, 36 Street shopping & downtown.

Built in 1990

Essential Information

| | |
|----------------|-------------|
| MLS® # | A2204750 |
| Price | \$559,900 |
| Bedrooms | 3 |
| Bathrooms | 1.00 |
| Full Baths | 1 |
| Square Footage | 1,085 |
| Acres | 0.06 |
| Year Built | 1990 |
| Type | Residential |
| Sub-Type | Detached |
| Style | 2 Storey |
| Status | Active |

Community Information

| | |
|-------------|-------------------------|
| Address | 154 Martindale Drive Ne |
| Subdivision | Martindale |
| City | Calgary |
| County | Calgary |
| Province | Alberta |
| Postal Code | T3J 3G6 |

Amenities

| | |
|----------------|---|
| Parking Spaces | 2 |
|----------------|---|

Parking Alley Access, Double Garage Detached, Heated Garage, Oversized, Garage Faces Rear

of Garages 2

Interior

Interior Features Quartz Counters, Storage, Sump Pump(s)

Appliances Dishwasher, Dryer, Electric Stove, Microwave Hood Fan, Refrigerator, Washer, Window Coverings

Heating Forced Air, Natural Gas

Cooling None

Fireplace Yes

of Fireplaces 1

Fireplaces Electric, Living Room, Stone

Has Basement Yes

Basement Full, Partially Finished

Exterior

Exterior Features Private Yard

Lot Description Back Lane, Back Yard, Front Yard, Low Maintenance Landscape, Rectangular Lot

Roof Asphalt Shingle

Construction Stone, Vinyl Siding, Wood Frame

Foundation Poured Concrete

Additional Information

Date Listed March 31st, 2025

Days on Market 4

Zoning R-CG

Listing Details

Listing Office Royal LePage Benchmark

Data is supplied by Pillar 9â„¢ MLSÂ® System. Pillar 9â„¢ is the owner of the copyright in its MLSÂ® System. Data is deemed reliable but is not guaranteed accurate by Pillar 9â„¢. The trademarks MLSÂ®, Multiple Listing ServiceÂ® and the associated logos are owned by The Canadian Real Estate Association (CREA) and identify the quality of services provided by real estate professionals who are members of CREA. Used under license.