

\$524,800 - 27 Castleridge Road Ne, Calgary

MLS® #A2202080

\$524,800

3 Bedroom, 2.00 Bathroom, 860 sqft
Residential on 0.12 Acres

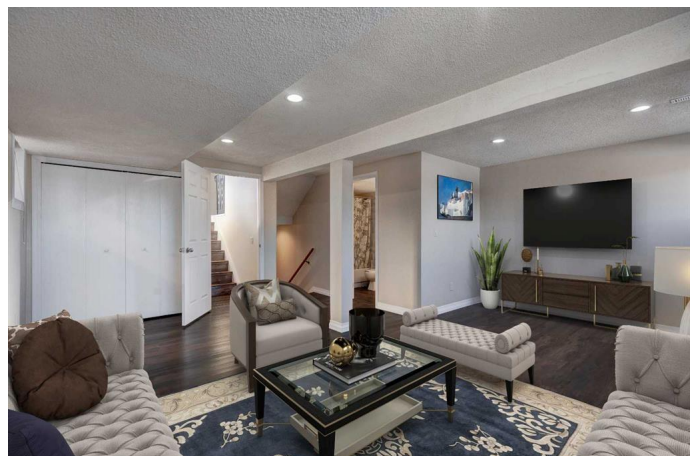
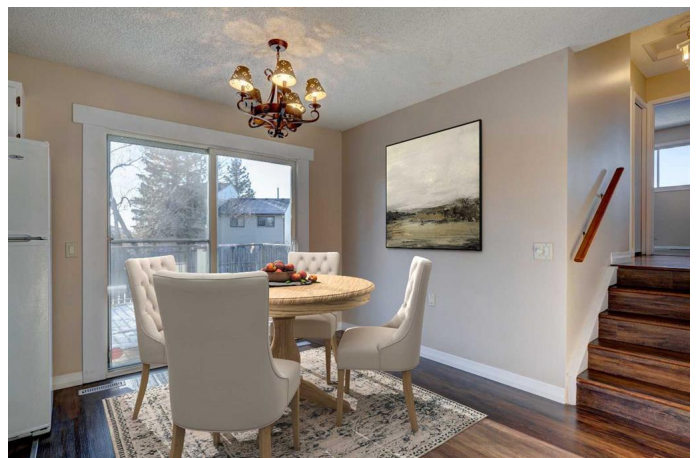
Castleridge, Calgary, Alberta

A classic 4-level split home in the NE community of Castleridge. Here we have a well-maintained family home with lots of upgrades throughout. The main level has a bright and open concept floor plan with a large living room, lots of windows, a lovely kitchen with granite countertops, formal dining and access to the yard via brand new deck. Upstairs you have 3 generous sized bedrooms including the primary bedroom and a full bath. Lower level offers you a spacious family/games room and another full bath, also with updated flooring. The basement offers you two versatile rooms with cozy carpets, perfect for a home office or craft space. The property includes a generous yard with a massive deck and an RV access gate. Situated on a huge corner lot with access to a paved back alley from the side and the back of the home and being conveniently located near schools, shopping, playgrounds, popular restaurants, public transport, the McKnight C-Train Station, and with easy access to major routes like Metis Trail, McKnight Blvd and Stoney Trail... this is the perfect location. Don't miss out! call today!

Built in 1980

Essential Information

MLS® #	A2202080
Price	\$524,800



Bedrooms	3
Bathrooms	2.00
Full Baths	2
Square Footage	860
Acres	0.12
Year Built	1980
Type	Residential
Sub-Type	Detached
Style	4 Level Split
Status	Active

Community Information

Address	27 Castleridge Road Ne
Subdivision	Castleridge
City	Calgary
County	Calgary
Province	Alberta
Postal Code	T3J 1N8

Amenities

Parking	Off Street, RV Access/Parking
---------	-------------------------------

Interior

Interior Features	Granite Counters
Appliances	Dryer, Electric Stove, Range Hood, Refrigerator, Washer, Window Coverings
Heating	Forced Air, Natural Gas
Cooling	None
Has Basement	Yes
Basement	Finished, Full

Exterior

Exterior Features	Lighting
Lot Description	Back Lane, Landscaped, Rectangular Lot, Treed
Roof	Asphalt Shingle
Construction	Stucco, Wood Frame
Foundation	Poured Concrete

Additional Information

Date Listed March 14th, 2025

Days on Market 21

Zoning R-CG

Listing Details

Listing Office RE/MAX Real Estate (Central)

Data is supplied by Pillar 9â,,ç MLSÂ® System. Pillar 9â,,ç is the owner of the copyright in its MLSÂ® System. Data is deemed reliable but is not guaranteed accurate by Pillar 9â,,ç. The trademarks MLSÂ®, Multiple Listing ServiceÂ® and the associated logos are owned by The Canadian Real Estate Association (CREA) and identify the quality of services provided by real estate professionals who are members of CREA. Used under license.