

\$588,800 - 303 Chelsea Parade, Chestermere

MLS® #A2200393

\$588,800

3 Bedroom, 3.00 Bathroom, 1,567 sqft
Residential on 0.06 Acres

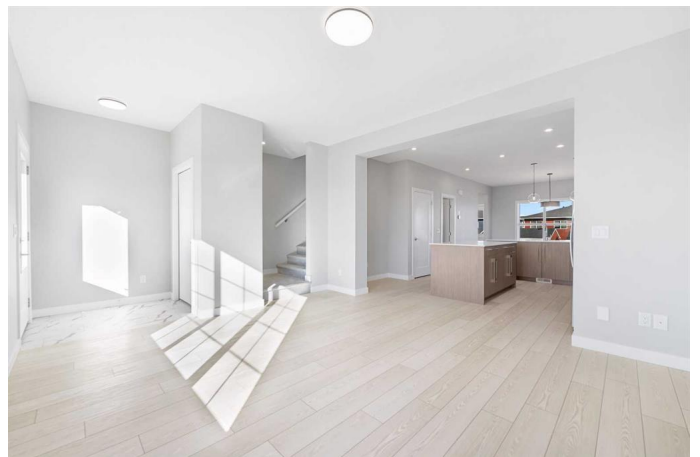
Chelsea_CH, Chestermere, Alberta

Welcome to your MOVE-IN READY dream home in Chelsea, Chestermere's newest and most sought after Master Planned community. This stunning END UNIT TOWNHOME offers modern design, functional living space, and best of all, NO CONDO FEES giving you the freedom of full ownership.

Step inside and experience a thoughtfully designed layout with three spacious bedrooms and a versatile BONUS ROOM upstairs, perfect for a home office, playroom, or cozy lounge area. The primary suite is a true retreat, featuring a walk-in closet and a beautifully designed ensuite with double vanities for added comfort and convenience.

The heart of the home is the stylish and contemporary kitchen, complete with sleek quartz countertops, stainless steel appliances, and an OPEN CONCEPT layout designed for both everyday living and entertaining. Large windows bring in plenty of natural light, creating a bright and welcoming atmosphere throughout the home.

The unfinished basement with 2 Egress Windows provides a blank canvas, offering endless possibilities to create two more bedrooms or a space that suits your needs, whether it be a home gym, media room, or additional living space. Outside, the backyard is perfect for relaxing or hosting gatherings, and the detached double garage is scheduled



to be completed by the builder.

Located in a vibrant and growing community, this townhome is approximately 7 minutes away to the Lake and Golf Course, close to parks, pathways, shopping, and schools, with easy access to major routes for a quick commute to Calgary. With its prime location, modern finishes, and opportunity for customization, this home is a must-see. Book your showing today!

Built in 2025

Essential Information

MLS® #	A2200393
Price	\$588,800
Bedrooms	3
Bathrooms	3.00
Full Baths	2
Half Baths	1
Square Footage	1,567
Acres	0.06
Year Built	2025
Type	Residential
Sub-Type	Row/Townhouse
Style	2 Storey
Status	Active

Community Information

Address	303 Chelsea Parade
Subdivision	Chelsea_CH
City	Chestermere
County	Chestermere
Province	Alberta
Postal Code	T1X 2V5

Amenities

Parking Spaces	2
Parking	Double Garage Detached

of Garages 2

Interior

Interior Features Kitchen Island, No Animal Home, No Smoking Home, Open Floorplan, Pantry, Quartz Counters, Walk-In Closet(s)

Appliances Dishwasher, Electric Stove, Microwave Hood Fan, Refrigerator, Washer/Dryer Stacked

Heating Forced Air

Cooling None

Has Basement Yes

Basement Full, Unfinished

Exterior

Exterior Features Private Entrance, Private Yard

Lot Description Back Yard, Rectangular Lot

Roof Asphalt Shingle

Construction Vinyl Siding

Foundation Poured Concrete

Additional Information

Date Listed March 7th, 2025

Days on Market 7

Zoning R-3

Listing Details

Listing Office Real Estate Professionals Inc.

Data is supplied by Pillar 9â„¢ MLSÂ® System. Pillar 9â„¢ is the owner of the copyright in its MLSÂ® System. Data is deemed reliable but is not guaranteed accurate by Pillar 9â„¢. The trademarks MLSÂ®, Multiple Listing ServiceÂ® and the associated logos are owned by The Canadian Real Estate Association (CREA) and identify the quality of services provided by real estate professionals who are members of CREA. Used under license.