

\$320,000 - 1122, 1140 Taradale Drive Ne, Calgary

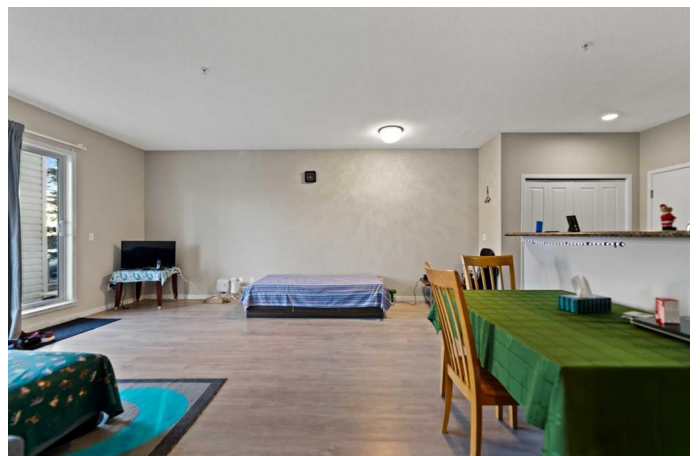
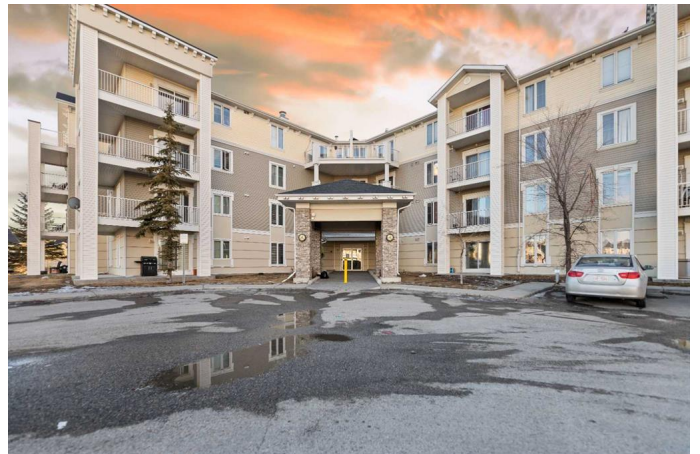
MLS® #A2197225

\$320,000

2 Bedroom, 2.00 Bathroom, 879 sqft
Residential on 0.00 Acres

Taradale, Calgary, Alberta

****CORNER/END UNIT on MAIN FLOOR with only 1 common wall at PRIME LOCATION**.** This unit is having 2 bedrooms & 2 full baths. Master bedroom has 4-piece ensuite bathroom & 2 closets. Designated in-unit laundry space-a breeze! Modern & functional kitchen with ample cabinets leads to living/dinning area. An inviting living room layout with patio door stepping out to assigned parking stall right in front for everyday convenience & ease -also serves as a ****Separate Private Entrance/Exit**** to unit & to enjoy outdoors. Main entrance leads to hallway & easy access to stairwell & exit door. ****Extra storage unit**** with good capacity right on main floor as shown in photo. Condo fee includes all utilities. Apartment amenities include ****bicycle storage & free of cost main floor party/recreational room**** for 20 people(need booking in advance). Walking distance to shopping plaza, neighborhood park, medical clinics, gas station, LRT/public transportation, schools & much more-making it an ideal place waiting for you to step into! ****Great home & investment property****



Built in 2007

Essential Information

MLS® #	A2197225
Price	\$320,000
Bedrooms	2

Bathrooms	2.00
Full Baths	2
Square Footage	879
Acres	0.00
Year Built	2007
Type	Residential
Sub-Type	Apartment
Style	Low-Rise(1-4)
Status	Active

Community Information

Address	1122, 1140 Taradale Drive Ne
Subdivision	Taradale
City	Calgary
County	Calgary
Province	Alberta
Postal Code	T3J 0G1

Amenities

Amenities	Bicycle Storage, Elevator(s), Party Room, Snow Removal, Storage, Trash, Visitor Parking
Parking Spaces	1
Parking	Assigned, Stall

Interior

Interior Features	No Animal Home, No Smoking Home, Open Floorplan, See Remarks, Separate Entrance
Appliances	Dishwasher, Electric Stove, Range Hood, Refrigerator, Washer/Dryer Stacked
Heating	Baseboard
Cooling	None
# of Stories	4

Exterior

Exterior Features	Lighting, Private Entrance
Construction	Concrete, Stone, Vinyl Siding, Wood Frame
Foundation	Poured Concrete

Additional Information

Date Listed	February 27th, 2025
-------------	---------------------

Days on Market 15
Zoning M-2

Listing Details

Listing Office Royal LePage METRO

Data is supplied by Pillar 9â,,ç MLSÂ® System. Pillar 9â,,ç is the owner of the copyright in its MLSÂ® System. Data is deemed reliable but is not guaranteed accurate by Pillar 9â,,ç. The trademarks MLSÂ®, Multiple Listing ServiceÂ® and the associated logos are owned by The Canadian Real Estate Association (CREA) and identify the quality of services provided by real estate professionals who are members of CREA. Used under license.