

\$729,900 - 96 Sundown Crescent, Cochrane

MLS® #A2196925

\$729,900

3 Bedroom, 3.00 Bathroom, 2,087 sqft
Residential on 0.10 Acres

Sunset Ridge, Cochrane, Alberta

Rare Findâ€¦Discover exceptional value in this stunning 2,087 SF(RMS Size) residence, meticulously crafted by the esteemed Douglas Homes Master Builder.

Introducing the sought after Mount Rundle Model, featuring a sun-kissed west front exposureâ€¦just across the street from a walking/bike path and minutes from the future community centre.

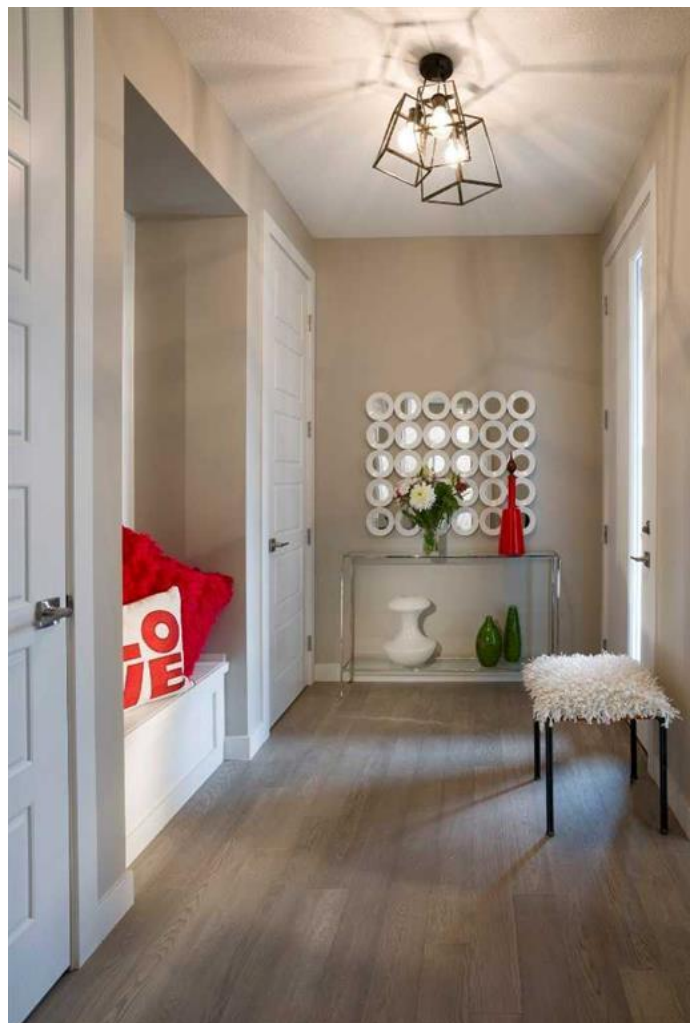
This radiant and extraordinary 3-bedroom home is a true gem in today's market, brimming with upgrades tailored for you and your family.

The open-concept main floor boasts 9' ceilings, expansive windows, and elegant engineered hardwood flooring, creating an airy and inviting atmosphere.

The sun-drenched dining area leads to a gorgeous kitchen, complete with a premium builder's grade appliance package, an impressive quartz island, and matching quartz countertops in the ensuite and hallway bathroom.

The stylish electric fireplace in the great room adds warmth and charm to the heart of the home.

Experience unparalleled luxury in the deluxe primary bedroom, featuring a lavish 5-piece



ensuite with his-and-her closets and matching sinks.

The grand entrance and front foyer is spacious while the stairs to the upper floor is adorned with exquisite wrought iron railings and a bright, roomy loft.

The versatile flex room on the main level, complete with two 8-foot doors, is perfect for working from home or pursuing hobbies.

This sought-after floor plan in Sunset Ridge has been designed with your growing family in mind.

Rancheview K-8 School is just a few blocks away and the St. Timothy High School is at the south end of Sunset Ridge, just a few minutes drive away. The future community centre and a third school, once done, will only be a short walking distance.

Escaping into the mountains is about 40-45 minutes away on the scenic road. Driving back to the City of Calgary is only about 30 minutes and to your nearest Costco as well and around 45 minutes to the airport.

Embrace elegance and sophistication in this remarkable home – schedule your viewing today and seize this extraordinary opportunity. Don't miss out! *** Pictures from our Mount Rundle Model Showhome... 96 Sundown Crescent listing has a slightly different exterior & interior finishing package and layout than as shown in the pictures presented here.(Attention fellow agents: Please read the private remarks.)

Built in 2025

Essential Information

MLS® # A2196925
 Price \$729,900
 Bedrooms 3
 Bathrooms 3.00
 Full Baths 2
 Half Baths 1
 Square Footage 2,087
 Acres 0.10
 Year Built 2025
 Type Residential
 Sub-Type Detached
 Style 2 Storey
 Status Active



Community Information

Address 96 Sundown Crescent
 Subdivision Sunset Ridge
 City Cochrane
 County Rocky View County
 Province Alberta
 Postal Code T4C 1Y3

Amenities

Amenities None
 Parking Spaces 4
 Parking Double Garage Attached
 # of Garages 2

Interior

Interior Features Closet Organizers, Kitchen Island, Pantry, Quartz Counters, Walk-In Closet(s)
 Appliances Dishwasher, Gas Stove, Microwave, Range Hood, Refrigerator
 Heating Forced Air
 Cooling None
 Fireplace Yes
 # of Fireplaces 1
 Fireplaces Electric
 Has Basement Yes
 Basement Full, Unfinished

Exterior

Exterior Features	Lighting
Lot Description	Back Lane, Back Yard, Front Yard
Roof	Asphalt Shingle
Construction	Wood Frame
Foundation	Poured Concrete

Additional Information

Date Listed	February 25th, 2025
Days on Market	17
Zoning	R1
HOA Fees	153
HOA Fees Freq.	ANN

Listing Details

Listing Office	MaxWell Canyon Creek
----------------	----------------------

Data is supplied by Pillar 9â„¢ MLSÂ® System. Pillar 9â„¢ is the owner of the copyright in its MLSÂ® System. Data is deemed reliable but is not guaranteed accurate by Pillar 9â„¢. The trademarks MLSÂ®, Multiple Listing ServiceÂ® and the associated logos are owned by The Canadian Real Estate Association (CREA) and identify the quality of services provided by real estate professionals who are members of CREA. Used under license.