

\$610,000 - 212 Taradale Drive Ne, Calgary

MLS® #A2177802

\$610,000

5 Bedroom, 2.00 Bathroom, 1,032 sqft
Residential on 0.08 Acres

Taradale, Calgary, Alberta

Fantastic Bi-Level Located in the Heart of Taradale. Main floor features 3 good sized bedrooms, spacious kitchen and Livingroom. Downstairs features a shared laundry area which provides privacy to both floors, 2 Large bedrooms and separate kitchen. Recently Fenced yard with a back lane and newer Double Detached Garage. Close to LRT, shops and schools. Bus stop is walking distance from the house.

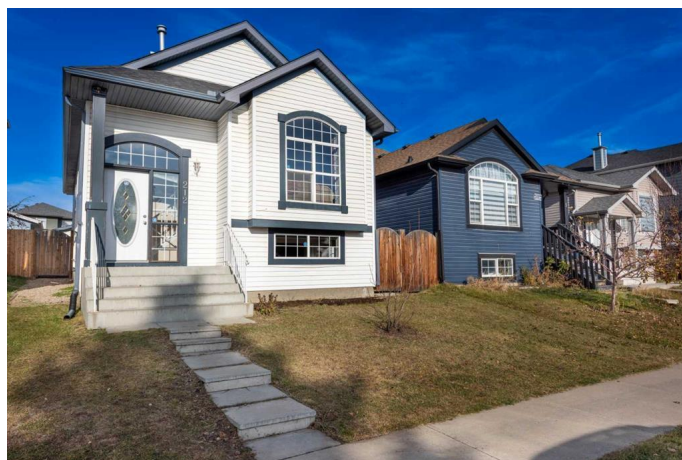
Built in 2005

Essential Information

MLS® #	A2177802
Price	\$610,000
Bedrooms	5
Bathrooms	2.00
Full Baths	2
Square Footage	1,032
Acres	0.08
Year Built	2005
Type	Residential
Sub-Type	Detached
Style	Bi-Level
Status	Active

Community Information

Address	212 Taradale Drive Ne
Subdivision	Taradale



City	Calgary
County	Calgary
Province	Alberta
Postal Code	T3J 5G6

Amenities

Parking Spaces	2
Parking	Double Garage Detached
# of Garages	2

Interior

Interior Features	Vinyl Windows, No Animal Home, No Smoking Home, Pantry, Quartz Counters, Solar Tube(s), Walk-In Closet(s)
Appliances	Dishwasher, Dryer, Electric Cooktop, Gas Range, Microwave Hood Fan, Refrigerator
Heating	Forced Air, Natural Gas
Cooling	None
Has Basement	Yes
Basement	Finished, Full

Exterior

Exterior Features	Courtyard
Lot Description	Back Yard, Rectangular Lot
Roof	Asphalt Shingle
Construction	Vinyl Siding, Wood Frame
Foundation	Poured Concrete

Additional Information

Date Listed	November 6th, 2024
Days on Market	127
Zoning	R-1N

Listing Details

Listing Office	Royal LePage METRO
----------------	--------------------

Data is supplied by Pillar 9â„¢ MLSÂ® System. Pillar 9â„¢ is the owner of the copyright in its MLSÂ® System. Data is deemed reliable but is not guaranteed accurate by Pillar 9â„¢. The trademarks MLSÂ®, Multiple Listing ServiceÂ® and the associated logos are owned by The Canadian Real Estate Association (CREA) and identify the quality of services provided by real estate professionals who are members of CREA. Used under license.