

\$398,000 - 1606, 210 15 Avenue Se, Calgary

MLS® #A2171347

\$398,000

2 Bedroom, 2.00 Bathroom, 924 sqft

Residential on 0.00 Acres

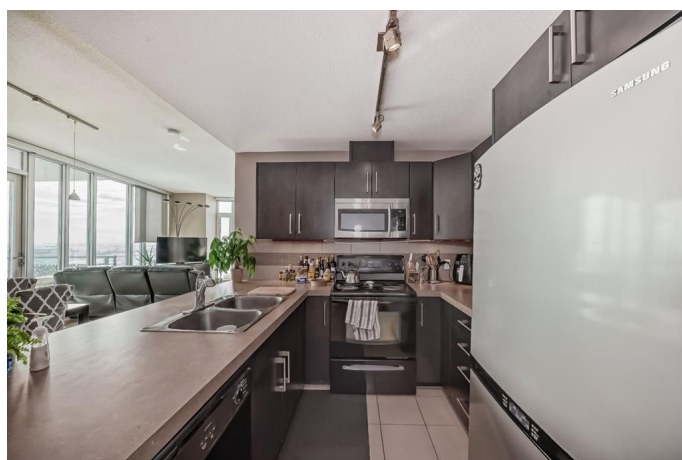
Beltline, Calgary, Alberta

Luxury living at its finest. Stunning two bedroom, two bathroom condo in the much desired VETRO building. This condo is loaded with amenities, including a Jacuzzi/steam area, theater, complete fitness center and gigantic games room, the perfect place to entertain. Steps from the Victoria Park C-train station and all the amenities 17 Avenue has to offer. Located on the southeast corner of the 16th floor, you will be blown away by the Stampede Park, Elbow River and mountain views. Ideal living space for the young professional or someone looking to downsize. Titled, heated underground parking stall is conveniently located beside the elevator entrance. Exceptional value. Call today for your free information package and to book your private viewing.

Built in 2008

Essential Information

MLS® #	A2171347
Price	\$398,000
Bedrooms	2
Bathrooms	2.00
Full Baths	2
Square Footage	924
Acres	0.00
Year Built	2008
Type	Residential



Sub-Type	Apartment
Style	High-Rise (5+)
Status	Active

Community Information

Address	1606, 210 15 Avenue Se
Subdivision	Beltline
City	Calgary
County	Calgary
Province	Alberta
Postal Code	T2G 0B5

Amenities

Amenities	Elevator(s), Fitness Center
Parking Spaces	1
Parking	Underground

Interior

Interior Features	Elevator
Appliances	Dishwasher, Electric Range, Microwave Hood Fan, Washer/Dryer
Heating	Forced Air, Natural Gas
Cooling	None
# of Stories	34

Exterior

Exterior Features	Balcony, Barbecue, BBQ gas line, Storage
Construction	Brick, Concrete

Additional Information

Date Listed	October 7th, 2024
Days on Market	195
Zoning	DC

Listing Details

Listing Office	First Place Realty
----------------	--------------------

Data is supplied by Pillar 9â„¢ MLSÂ® System. Pillar 9â„¢ is the owner of the copyright in its MLSÂ® System. Data is deemed reliable but is not guaranteed accurate by Pillar 9â„¢. The trademarks MLSÂ®, Multiple Listing ServiceÂ® and the associated logos are owned by The Canadian Real Estate Association (CREA) and identify the quality of services provided by real estate professionals who are members of CREA. Used under license.